

Annual Report 2022



T.E.A.D. Equestrian Association for the Disabled

TEAD MISSION

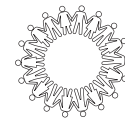
We are dedicated to enhancing the quality of life for children and adults with any physical, cognitive and emotional challenges through a unique form of proven therapy with the use of horses.

TEAD VALUES

We strive to demonstrate our values every day, and in everything we do.



Commitment to Safety



Collaboration



Integrity



Respect

KEY STAFF

Marci Shea-Perry - Executive Director (until Oct 2022)
Hilary Webb - Program Manager
Rachael Bridle - Barn Manager
Bonnie Knapp - Coordinator of Volunteers
Kim Curran-Meadowcroft - Business Manager
Rachel Harper - Program Assistant

BOARD OF DIRECTORS

Sue Schramayr, Chair
Matthew Rosato, Vice-Chair
Marn Lawton, Secretary
Christina Mattina, Treasurer
Mark Hunter, Director
Alexandra Del Bel Belluz, Director
David Prazerres, Director
Ember Chance, Director

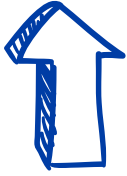


TEAD Equestrian Association for the Disabled
8360 Leeming Rd East, R.R.#3 Mount Hope ON
905.679.8323

Registered Charity #889874970RR0001

PROGRAM PARTICIPANTS

TEAD provides therapeutic riding and equine-based programs to children and adults with disabilities. Through the power of horses, individuals experience physical, mental and social benefits. TEAD is a place where everyone belongs.



20% increase

in the number of individuals served at TEAD

409 Program spots were filled in 2022

41 primary diagnoses seen including autism, cerebral palsy, genetic syndromes, ADHD

67% of program participants are 17 years and younger

201 Unique individuals served including:
(some people participate in more than one program)

116 Therapeutic Riding

32 Equine Assisted Learning *new program

22 Unmounted Programs

56 Summer Camp

A broad range of programs were offered in 2022



Therapeutic riding

Private, semi-private & group lessons



Summer camp

7 weeks of integrated camp for ages 6-16



Unmounted

Grooming
Teen Program
Munchkins in Motion



EAL

Leadership,
communication & teamwork



"My daughter has the best physical therapy at TEAD and she doesn't even know it. She's having way too much fun to realize."

VOLUNTEERS



43% increase in volunteer support

Average = 116 volunteer shifts filled per week.

Volunteers per session

(some individuals volunteer for more than one session)

Spring = 107

Summer = 93

Fall = 106

Winter = 72

Night Feeders = 22

- An OTF Resiliency Fund Grant allowed TEAD to realize a plan to build up the critical mass of volunteers lost during COVID. Over the last year, we invested in recruiting, training and retaining volunteers.
- We completed a much-needed volunteer breakroom. As we recruit new volunteers and our numbers grow, it will be a central area to share communications and celebrate accomplishments.
- The Hamilton FireFighters volunteered their time to build our volunteer breakroom, equipment storage room, and arena kick-boards

TEAD Volunteers in Action



BARN



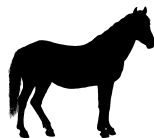
LESSONS



FACILITIES



HORSES



13 horses and ponies of various sizes and breeds served our riders in 2022



Opie
new in 2022



Willie



Lady
new in 2022



Hottie
*retired in 2022



Cooper

Not all TEAD horses are pictured

UPGRADES

Thanks to many hours of in-kind labour, individual directed donations, and multiple capital grants totalling \$102,000 TEAD was able to invest in capital upgrades to improve on safety, accessibility, and quality of experience.

Upgrades include:

- Fencing repairs & paddock regrading
- Upgraded manure containment area
- Upgraded arena footing
- New arena kick-boards
- Installed state of the art mounting ramp
- New equipment storage room
- Repainted barn, office and outbuildings
- New Volunteer break room



FINANCIALS

2022 was a challenging year as TEAD continued to face pandemic restrictions without financial subsidies and a dampened fundraising environment brought on by inflation and economic uncertainties. The cost of maintaining the TEAD herd and retaining staff also increased significantly.

**Total 2022
Operational Expenses
= \$ 651,272**

(compared to \$451,873 in 2021)

**The net result was an operational loss
of \$4,358 on the year ***

For a complete 2022 financial report, please contact Melissa Horvath at
Melissa.horvath@tead.on.ca
or 905.679.8323 ext 223

*-\$33,484 if you include amortization and investment income losses.

DONORS

We are so grateful for the many individuals, companies, organizations and foundations that support TEAD.

Thank You

343 donations were made to TEAD in 2022. We are grateful for every gift!

Adams, Carolyn	Couture, Ken	Kennedy, Howard	Rowley, Jessica
Agis, Judith	Culley, Alexandra	Kidd, Connie	Rouse, Doug
Akitt, Tracey	Curran, Kim	Klemens, Chris	Ryan, Joanne
Allen and Milli Gould Family Fdn	Dearness, Karin	Kaminsky, Jane	Sabourin, Thomas & Jane
Allen, Brian	Dellotenville, Brian	Lacko, Kathleen	Salter, Herb
Alowini, Alaa	Devlin Reithmeier, Kathleen	Latimer, Jeff	Salonia, Joe
Bailey, Nancy	DiMambro, Linda	Lawrie, Dan	Savin, Lynn
Baker, Amy	DiMambro, Tony	Lennon, Patrick	Schiefer, Caitlyn
Barker, George	Donat, Lois	Liftow	Schramayr, Sue
Barker, Karen	Dufresne, Catherine	Lions Club of Caledonia	Seed, Julia
Bartolozzi, Cecelia	Dutchak, Nicole	Lions Club of Waterford	Shea-Perry, Marci
Bayshore HealthCare	Eastgate Ford	Lowes / Rona Inc	Simmons, Nicola
Bell Canada.	Eldridge, Vicky	MacDiarmid, Ron	Silenzi, Laurel
Bhatt, Mihir	Ethier, Natalie	Malcomsen, Mary	Smith, Bill (William) G
Bishop, Joyce	Favero, Anna	MacLeod, John & Jamie	Stanton, Carol
Boisvert, Claude & Teresa	Fell, Mona	McGrady, John	System Fencing Ltd
Bombini, Guerrina	Fernandes, Marian	McKenzie, Cameron	Takach, John
Bortolusso Bowler, Luana	Four Seasons Site Dev. Ltd	McKay, Nancy	Taylor, Judy
Breimer, Matt	Fraser, Lee	Mercuri, Terri	Taylor, Marieka
Brydges, Suzanne	Gasparini, Stephanie	Mitton, Barbara	Therault, Sue
Caledonia Transport Sales	Glen Gowrie Farms Ltd.	Mochrie, Bruce	Thomsen-Jung Farms
Camera, Deborah	Goegan, Consuelo	Moody, Shawn	Tomlinson, Janice
Canadian Soc for Med Lab Science	Gough, A.	Moore, Liz	Tilley, John
Canadian Online Giving Assoc	Gow, Margaret	Mueller Technology Solutions	Tilley, Susan
Carlan, Wendy & John	Griffiths, Owen	Nancy DeAngelis Piano Studio	Total Healthcare Solutions
Carlisle United Church Women	Gwinnett, Catherine	Noble, Jeff	Trbovich, Anna
Cestra, Emily	Grassa, Angelo	Optimist Club of Stoney Creek	Veerman, Lucy
Chan, Anthony	Hagersville & Dist Lions Club	Osborne, Paul	VPI
Chiarot, Marlene	Holiny, Sylvia	Panoff, James (Jim)	Whitehead, Dana & Michael
Church, Hannah	Hoogendoorn, Hugh	Pike, Jeremiah	Whitlock, Christine
Clark, Gavin	Hoy, Nancy	Pyatt, Andrew	Windhorst, Dirk & Gerri
Clark, Kathryn	Johnson, Julie	Riley, Becky	Windhorst, Natalie
Clarke-Davies, Marie	Johnston Motor Sales Co Ltd	Rossi Glass Niagara	Wright, Anne
Collins, Lynne	Johnston, Joyce	Roth, Kairin	
Corbett, Teresa Lynne	Johnston, Elizabeth		
Courchesne, Renaud	Johnston, Sue		

These friends contributed \$5,000 or more during 2022

Ontario Trillium Foundation
Hamilton & District Society for Disabled Children
Four Oaks/Newlands Family Foundation
City of Hamilton
Marn Lawton
Minto Foundation
Hamilton Community Foundation
Thomsen-Jung Farms

Canadian Tire Jumpstart Charities
Panattoni Construction
Allen & Milli Gould Family Foundation
Marlene Kelland
Erwin Taylor Charitable Foundation
Horse Power Car Show
TEAD Golf Tournament 2022

Thank you to our Granting Partners in 2022



Tractor on loan to TEAD

Thank you for your ongoing support!

Golf Tournament 2022

An amazing day on the greens in support of TEAD



Horse Power Car Show

Thank you for raising funds for TEAD

Donations from young riders & volunteers

Thank you Marieka and Parker



LOOKING TO THE FUTURE...

As we begin our 45th year, we have a bold vision for the future. We continue to learn, build, and support each other, all with the mission of helping individuals optimize their health through the power of horses. We look forward to continued friendships with you all!

Your TEAD Team